



Artist impression of Irrawang High School upgrade

Irrawang High School upgrade

Project update

September 2022

Investing in our schools

The NSW Government is investing \$8.6 billion in school infrastructure over the next four years, continuing its program to deliver 160 new and upgraded schools to support communities across NSW. This builds on the more than \$9.1 billion invested in projects delivered since 2017, a program of \$17.7 billion in public education infrastructure.

The NSW Department of Education is committed to delivering new and upgraded schools for communities across NSW. The delivery of these important projects is essential to the future learning needs of our students and supports growth in the local economy.

Project overview

A project is underway to upgrade Irrawang High School to bring students the latest educational facilities and support the local community.

The project has been approved to proceed to the delivery phase and, subject to planning approval, will deliver:

- new learning hub with 8 general learning spaces and 6 support learning spaces
- expansion and refurbishment of the library
- new school entry
- new support student drop-off / pick-up area.

How can I get involved?

From 9 am Monday 19 September 2022 to 5 pm Monday 26 September 2022, we will be holding a Virtual Information Session where you can find out more about the progress of this project. Visit the SINSW website at any time via edu.nsw.link/IrrawangHSupgrade, day or night during this period to access the Virtual Information Session or scan the QR code.



For more information contact:

School Infrastructure NSW
Email: schoolinfrastructure@det.nsw.edu.au
Phone: 1300 482 651
www.schoolinfrastructure.nsw.gov.au

Progress summary

A Project Reference Group (PRG) has been established which includes architects, planners and design professionals, and Department of Education, Irrawang High School, and P&C leadership representatives.

The schematic design has been finalised in consultation with the PRG to meet Irrawang High School's educational and operational requirements.

Next steps

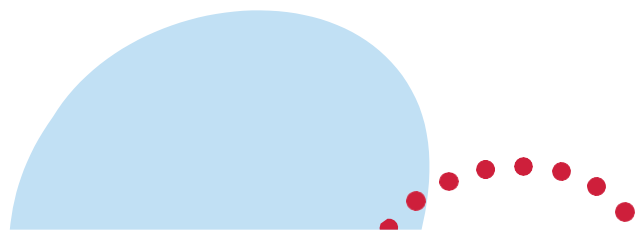
- Develop the detailed design for the upgrades, including the internal layout of spaces and how they will function.
- Planning application submission and approval by relevant authorities.
- A builder will be appointed following the tender process.

Keep in touch

The School Infrastructure NSW (SINSW) website will continue to have up-to-date information about the project in your area. Your feedback on this project is important to us. For more information, questions or to make a comment please email us at schoolinfrastructure@det.nsw.edu.au.

For more information contact:

School Infrastructure NSW
Email: schoolinfrastructure@det.nsw.edu.au
Phone: 1300 482 651
www.schoolinfrastructure.nsw.gov.au



Irrawang High School upgrade

The information below takes you through the journey of upgrading a school.

Early planning

- Consideration and studies of demographic trends, education requirements, the condition of the existing school buildings, catchment boundaries, heritage requirements, transport links and partnership opportunities.
- Doing so means that we:
 - consider the needs of the local area now and into the future.
 - ensure the right school is designed for the community.
- An important step before an architect or other contractors are appointed and official community engagement commences.

Planning

- Consultants such as architects and project managers are appointed.
- Investigation and review of site and development of master plan options.
- Master planning considers options for the general size, shape and form of buildings for a specific school site.
- A Project Reference Group (PRG) is established.
- Operational, educational and service delivery factors are understood and considered by the PRG.

A series of preliminary master plan options are considered along with the educational concept and design for the school.

A preferred concept design option is identified.

- Once a preferred option is identified approval is needed
 - in order to progress from planning through to project delivery.

Subject to government approval to proceed

Delivery

- The construction works program to deliver the upgrade to the school is developed in collaboration with the school and where appropriate, the local community.
- Ongoing consultation with Principal, staff and other school users.
- Throughout detailed design and construction updates are provided to the local community.

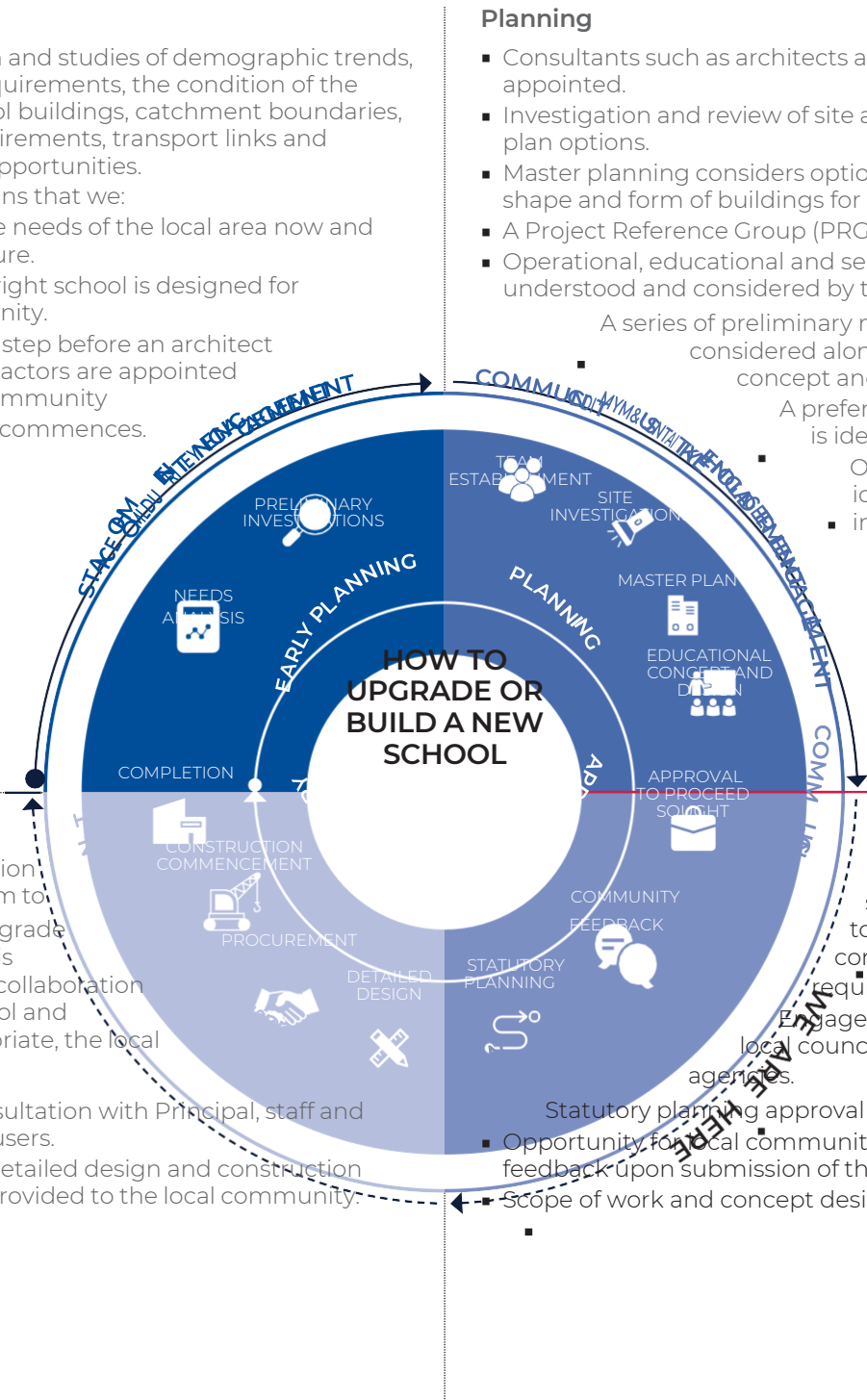
Approvals

Workshops continue with school and local community to understand challenges and constraints and identify future requirements.

Engagement of technical specialists, local councils and other government agencies.

Statutory planning approval process.

- Opportunity for local community to view and provide feedback upon submission of the Development Application.
- Scope of work and concept design is further defined.



For more information contact:

School Infrastructure NSW
 Email: schoolinfrastructure@det.nsw.edu.au
 Phone: 1300 482 651
www.schoolinfrastructure.nsw.gov.au

